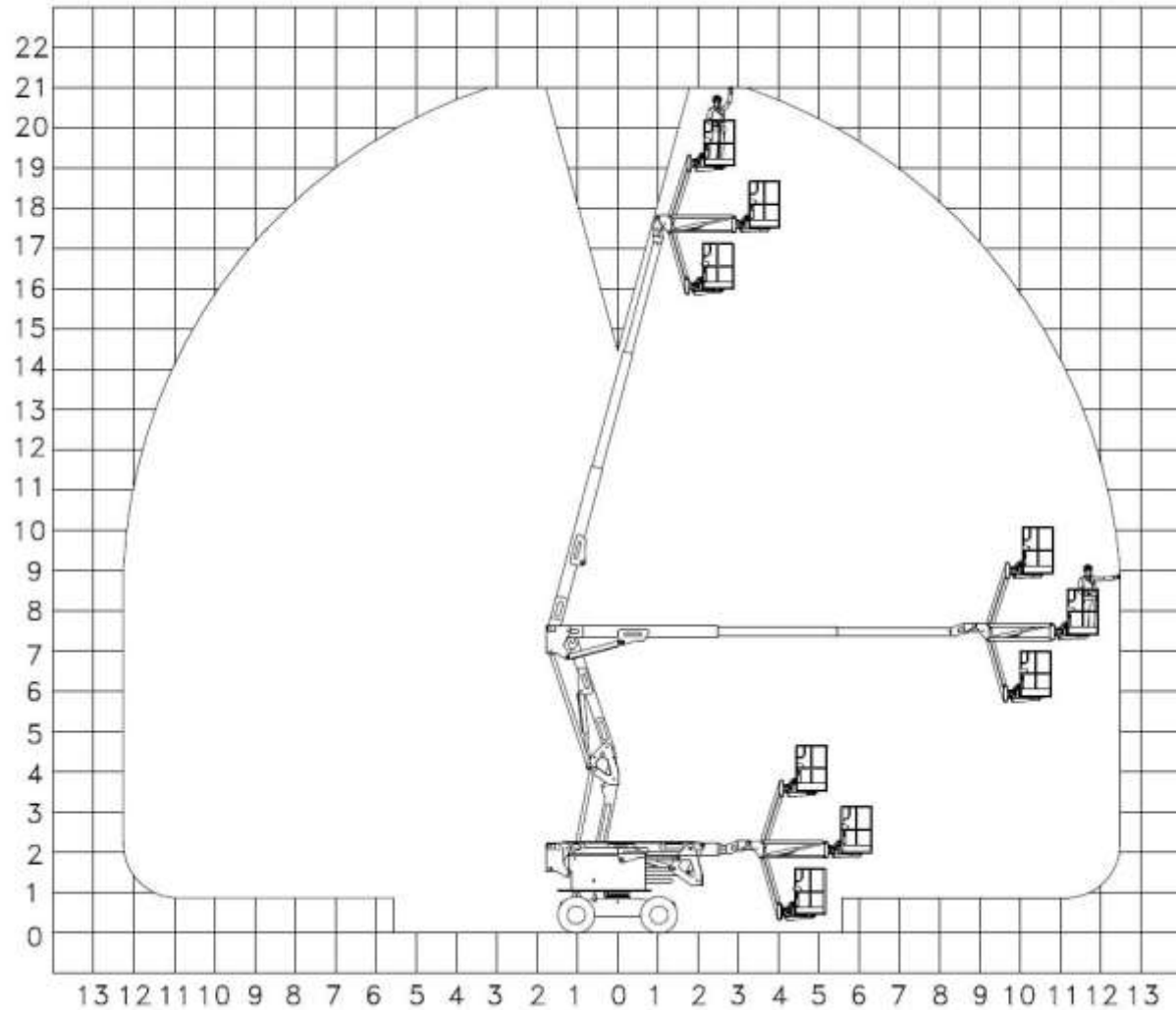


WORK AREA





TECHNICAL DESCRIPTION SPECIFICATIONS

* Manufacturer	MATILSA, S.A.
* Model	PARMA-21D
* Working height (m)	21,00
* Platform height (m)	19,00
* Horizontal Outreach (m)	12,45
* Platform size (m)(l x a)	1,80 x 0,77
* Stowed length (m)	5,40
* Overall width (m)	2,30
* Stowed height (m)	2,50
* Ground clearance (m)	0,31
* Turning radius inside(m)	1,3
* Swing	359°
* Platform rotator	180°
* Gradeability	30%
* High speed (m/sec)	1,95
* Low speed (m/sec)	0,28
* Platform capacity (Kg)	225
* Maximum manual force (N)	400
* Maximum tilt	2,5°
* Maximum wind speed (m/sec)	12,5
* Gross vehicle weight (Kg)	8.840
* Gross vehicle weight with hydraulic outriggers (Kg)	9.508
* Diesel engine (HP)	35
* Hydraulic lifting pump	Gear pump
* Hydraulic drive pump	Variable
* Hydraulic filters	Suction, return
* Hydraulic reservoir (l)	93
* Fuel tank capacity (l)	100

